

SUMMER 2022 CEER LOGISTICS PLAN

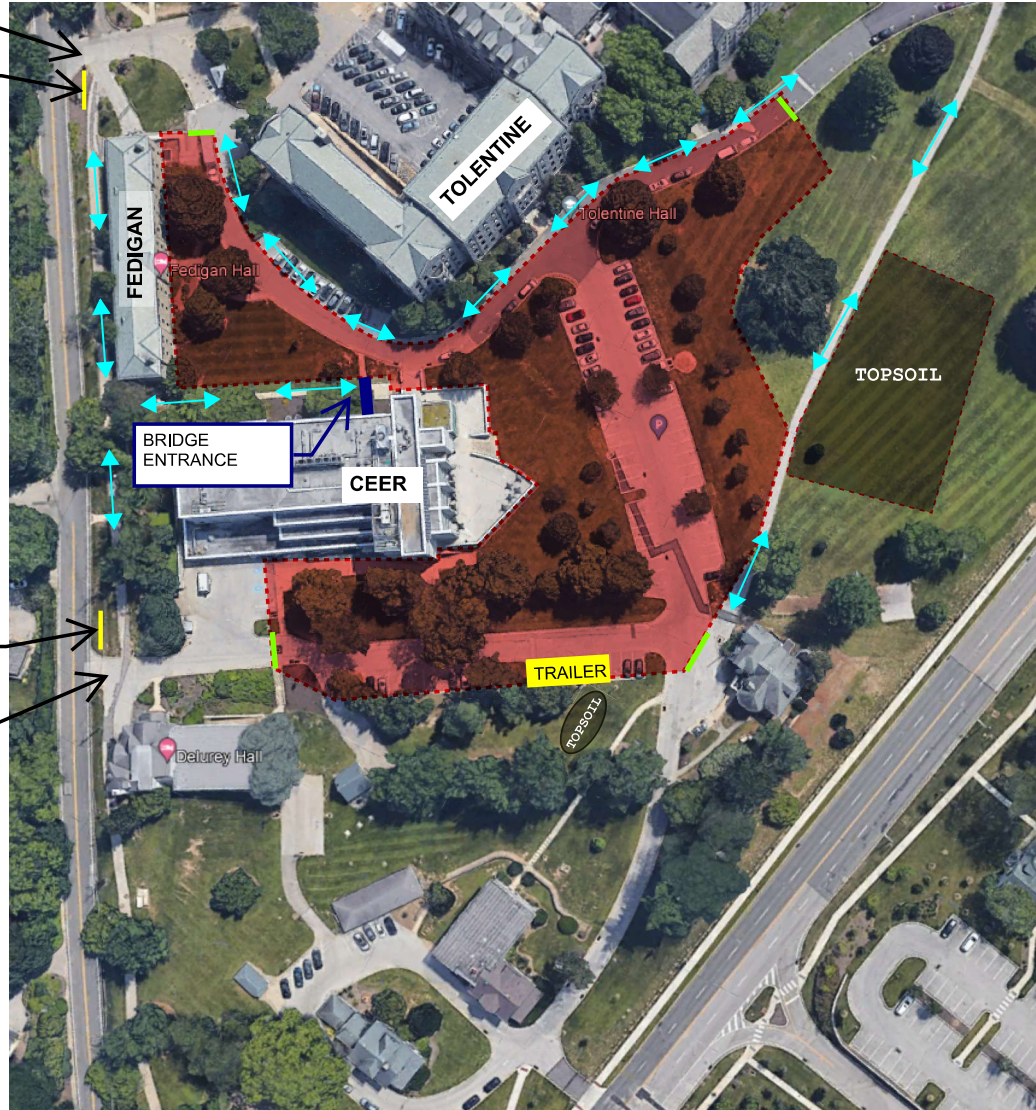
**THE ROAD BETWEEN
FEDIGAN AND THE
MONASTERY WILL BE
CLOSED FROM
5/9/22 - 8/12/22**

Union Construction Entrance

Entrance Signage

Entrance Signage

Primary Construction Entrance



LEGEND

- CONSTRUCTION AREA
- CONSTRUCTION GATE
- PEDESTRIAN PATHWAYS

PHASE 3 CONSTRUCTION ACTIVITIES:

- UTILITY RELOCATIONS
- STORM AND STEAM INSTALLATION
- EXCAVATION
- STORMWATER MANAGEMENT INSTALLATION
- ROOF DRAIN TIE-INS AT TOLENTINE AND THE MONASTERY
- FOOTINGS AND FOUNDATION WALLS